

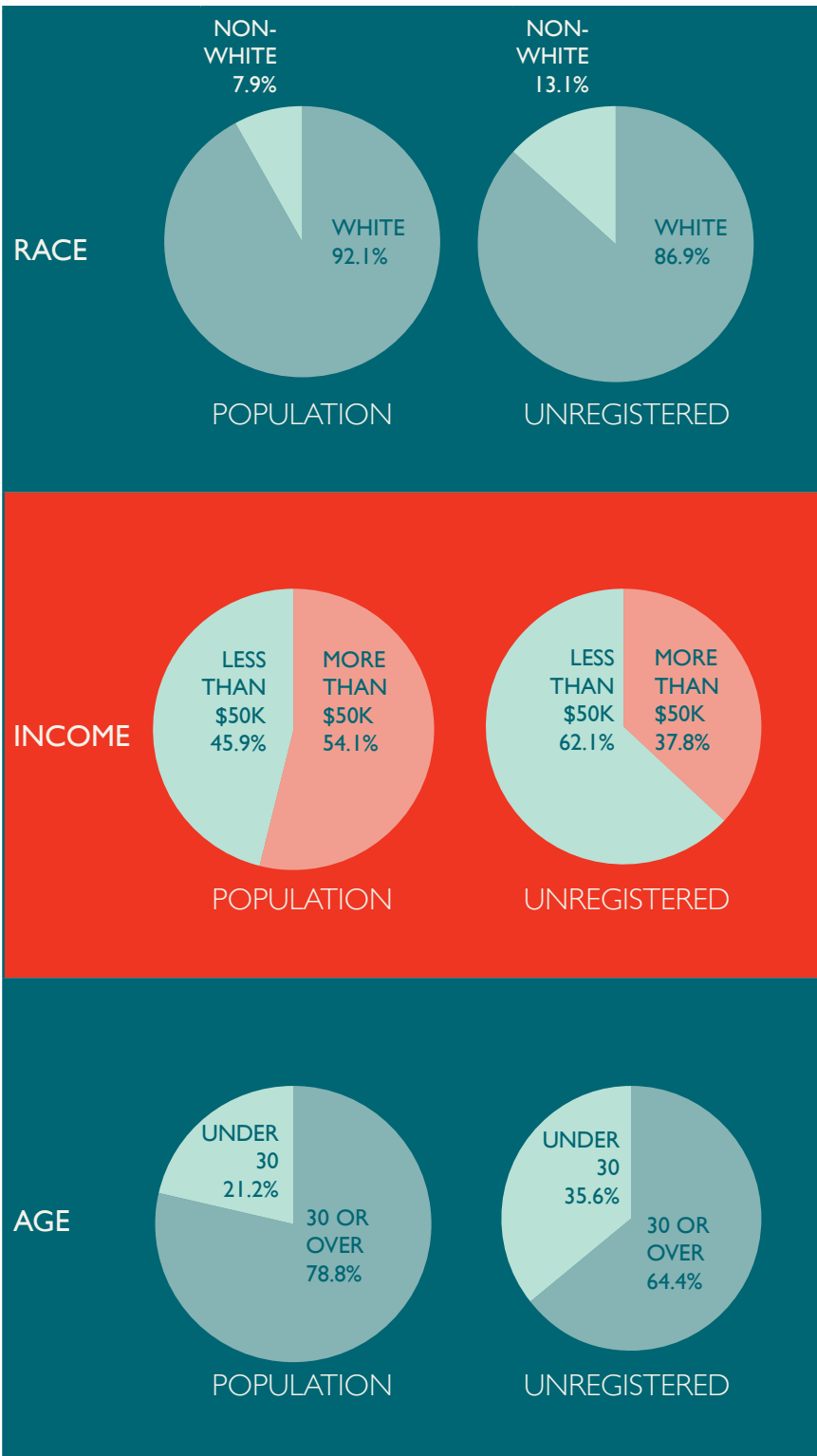


REPRESENTATIONAL BIAS IN IOWA

COMPOSITION OF THE STATE ELECTORATE: 2014 MID-TERM ELECTION

Demographic Category	Comparison Groups	% of Adult Citizens	% of Voters
RACE	White	92.14%	95.00%
	Black	2.58%	1.68%
	Asian/Pacific Islander	1.49%	1.05%
	Latino	2.30%	0.89%
	Native American	0.29%	0.26%
AGE GROUP	Two or More Races	1.20%	1.12%
	Under 30 years old	21.20%	9.61%
	30 to 64 years old	58.10%	61.72%
ANNUAL HOUSEHOLD INCOME	65 years old and over	20.70%	28.67%
	Less than \$25,000	21.40%	29.23%
	\$25,000 to \$50,000	24.48%	28.35%
	\$50,000 to \$75,000	19.72%	16.86%
	\$75,000 to \$100,000	13.48%	12.57%
EDUCATION	More than \$100,000	20.91%	12.99%
	Less than High School Graduate	5.08%	1.88%
	High School Graduate	32.66%	27.36%
	Some College Experience	35.07%	33.78%
MARITAL STATUS	Bachelor's Degree or Higher	27.19%	36.78%
	Married	57.84%	69.85%
DISABILITY	Not Married	42.16%	30.15%
	Disability Reported	12.53%	12.60%
TIME AT PRESENT RESIDENCE	No Disability Reported	87.47%	87.40%
	Less than 1 year	13.50%	6.98%
	1 to 4 years	25.62%	21.85%
	5 year or longer	60.88%	71.17%

STATE'S ADULT CITIZEN POPULATION VS. STATE'S UNREGISTERED POPULATION, 2014



COMPOSITION OF THE STATE ELECTORATE: 2012 PRESIDENTIAL ELECTION

Demographic Category	Comparison Groups	% of Adult Citizens	% of Voters
RACE	White	92.16%	93.97%
	Black	1.96%	1.96%
	Asian/Pacific Islander	1.23%	1.23%
	Latino	1.95%	1.95%
	Native American	0.14%	0.14%
AGE GROUP	Two or More Races	0.76%	0.76%
	Under 30 years old	19.43%	15.99%
	30 to 64 years old	60.84%	60.45%
ANNUAL HOUSEHOLD INCOME	65 years old and over	19.73%	23.56%
	Less than \$25,000	18.94%	14.96%
	\$25,000 to \$50,000	27.64%	25.26%
	\$50,000 to \$75,000	24.10%	24.56%
	\$75,000 to \$100,000	14.25%	16.76%
EDUCATION	More than \$100,000	15.07%	18.47%
	Less than High School Graduate	8.45%	4.33%
	High School Graduate	33.72%	29.24%
	Some College Experience	31.92%	34.56%
MARITAL STATUS	Bachelor's Degree or Higher	25.91%	31.87%
	Married	57.64%	64.25%
DISABILITY	Not Married	42.36%	33.75%
	Disability Reported	13.88%	12.79%
TIME AT PRESENT RESIDENCE	No Disability Reported	86.12%	87.21%
	Less than 1 year	11.42%	9.18%
	1 to 4 years	24.94%	22.46%
	5 year or longer	63.64%	68.36%

FOR MORE INFORMATION, SEE *REPRESENTATIONAL BIAS IN THE 2014 ELECTORATE*
AVAILABLE AT WWW.PROJECTVOTE.ORG