

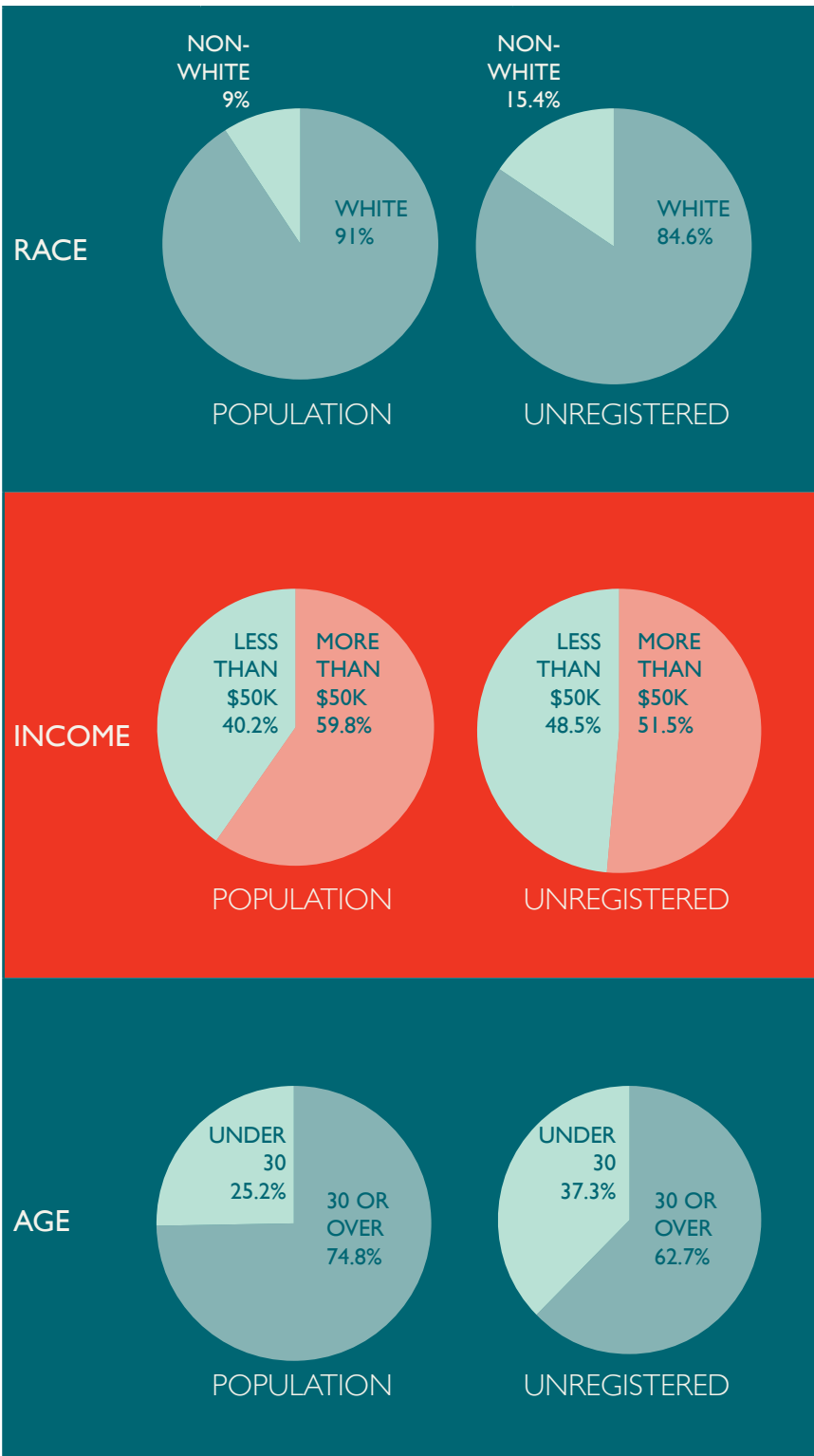


REPRESENTATIONAL BIAS IN NORTH DAKOTA

COMPOSITION OF THE STATE ELECTORATE: 2014 MID-TERM ELECTION

Demographic Category	Comparison Groups	% of Adult Citizens	% of Voters
RACE	White	90.95%	94.84%
	Black	0.99%	0.54%
	Asian/Pacific Islander	0.51%	0.44%
	Latino	2.58%	0.57%
	Native American	3.21%	1.78%
	Two or More Races	1.76%	1.83%
AGE GROUP	Under 30 years old	25.21%	14.84%
	30 to 64 years old	56.49%	58.30%
	65 years old and over	18.30%	26.86%
ANNUAL HOUSEHOLD INCOME	Less than \$25,000	17.30%	13.76%
	\$25,000 to \$50,000	22.91%	20.23%
	\$50,000 to \$75,000	21.53%	19.64%
	\$75,000 to \$100,000	14.59%	16.17%
	More than \$100,000	23.66%	30.21%
EDUCATION	Less than High School Graduate	6.87%	3.79%
	High School Graduate	28.75%	23.39%
	Some College Experience	36.68%	36.73%
	Bachelor's Degree or Higher	27.70%	36.09%
MARITAL STATUS	Married	55.41%	67.99%
	Not Married	44.59%	32.01%
DISABILITY	Disability Reported	10.93%	9.34%
	No Disability Reported	89.07%	90.66%
TIME AT PRESENT RESIDENCE	Less than 1 year	16.04%	7.24%
	1 to 4 years	32.95%	28.96%
	5 year or longer	51.01%	63.80%

STATE'S ADULT CITIZEN POPULATION VS. STATE'S UNREGISTERED POPULATION, 2014



COMPOSITION OF THE STATE ELECTORATE: 2012 PRESIDENTIAL ELECTION

Demographic Category	Comparison Groups	% of Adult Citizens	% of Voters
RACE	White	88.21%	91.08%
	Black	0.73%	0.66%
	Asian/Pacific Islander	0.37%	0.15%
	Latino	2.80%	1.75%
	Native American	7.06%	5.40%
	Two or More Races	0.97%	0.97%
AGE GROUP	Under 30 years old	22.60%	18.35%
	30 to 64 years old	61.05%	63.15%
	65 years old and over	16.35%	18.50%
ANNUAL HOUSEHOLD INCOME	Less than \$25,000	21.36%	18.23%
	\$25,000 to \$50,000	26.26%	25.91%
	\$50,000 to \$75,000	23.73%	22.09%
	\$75,000 to \$100,000	12.02%	14.28%
	More than \$100,000	16.63%	19.50%
EDUCATION	Less than High School Graduate	7.33%	5.48%
	High School Graduate	28.19%	22.76%
	Some College Experience	35.01%	35.06%
	Bachelor's Degree or Higher	29.47%	36.71%
MARITAL STATUS	Married	56.39%	61.68%
	Not Married	43.61%	38.32%
DISABILITY	Disability Reported	11.29%	10.10%
	No Disability Reported	88.71%	89.90%
TIME AT PRESENT RESIDENCE	Less than 1 year	18.25%	14.88%
	1 to 4 years	28.86%	26.93%
	5 year or longer	52.90%	58.19%

FOR MORE INFORMATION, SEE *REPRESENTATIONAL BIAS IN THE 2014 ELECTORATE*
AVAILABLE AT WWW.PROJECTVOTE.ORG